

B&NES, Swindon and Wiltshire STP



Maternity Services Update
Scrutiny for Policies, Adults and Health Committee
– October 3rd 2018

Future Service

Our co-created (engagement with more than 2,000 women and families) LMS vision is for all women to have a safe and positive birth and maternity experience and to be prepared to approach parenting with confidence.

Our future offer to our women and families will include:

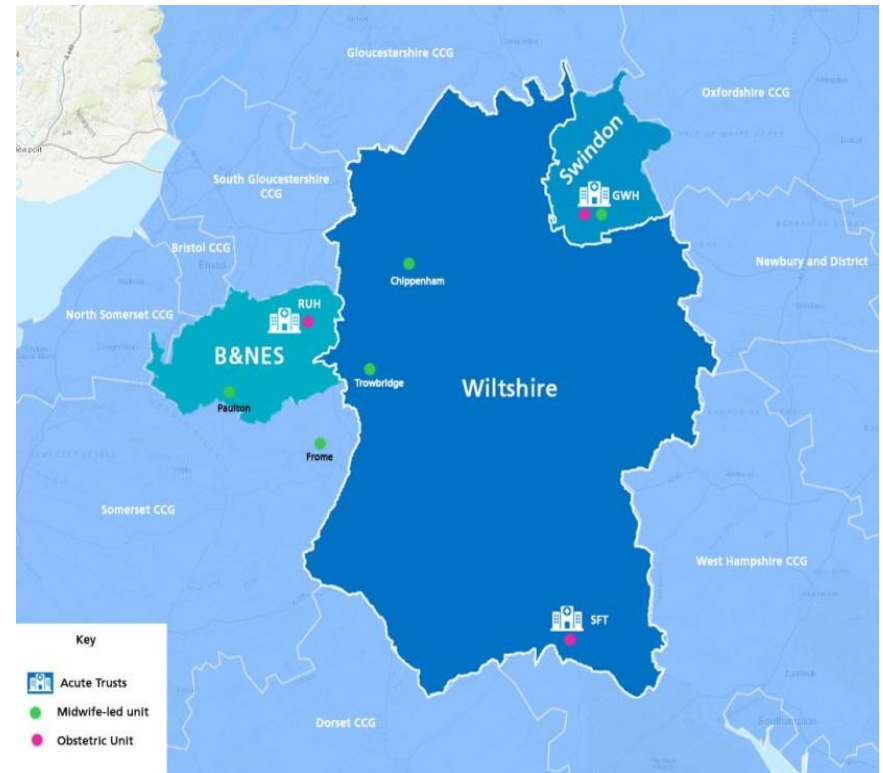
- Continuity of carer (20% by 2019)
- Improved personalised care and choice with parity of access
- Creation of Clinical Maternity Hubs to provide ante and postnatal care close to home – including Frome
- Delivery of seamless pathways across organisational and geographical boundaries

BSW Local Maternity System

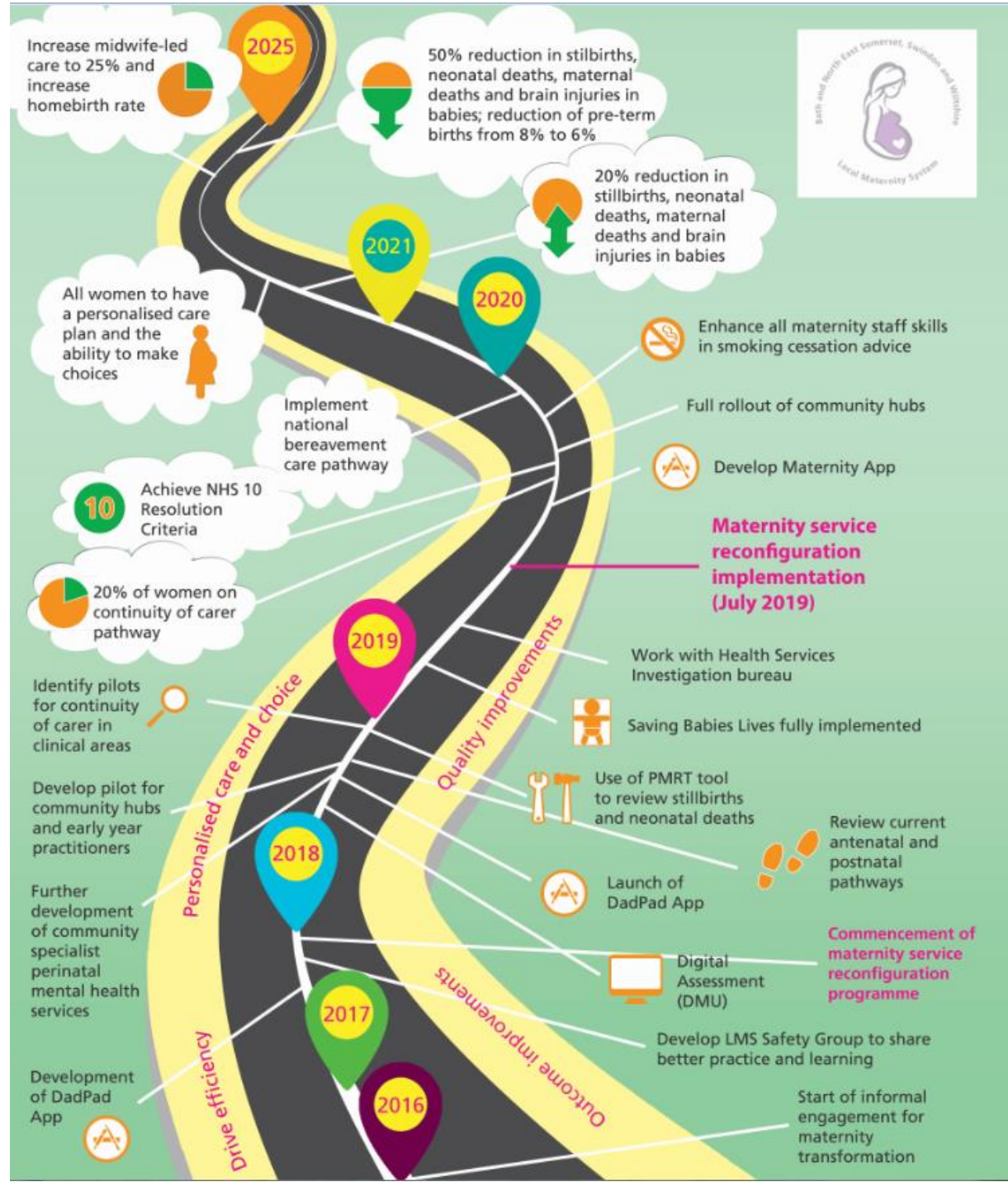
Maternity Transformation workstreams

- Continuity of carer
- Antenatal and postnatal care
- Safer care
- Personalised care and choice
- Perinatal Mental Health
- Workforce transformation
- Working across boundaries / multi agency working

Engagement with Somerset since project commencement in Jan 2017



Roadmap of the BSW MTP ambitions



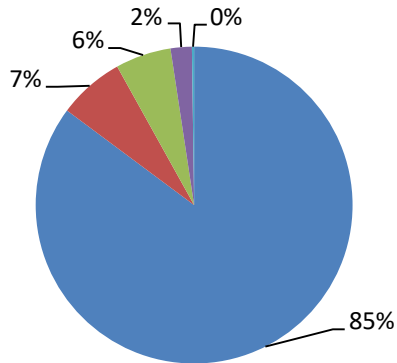
BSW LMS Maternity Services

Organisation	Maternity care and birth provision				
	Antenatal and postnatal care	Obstetric Unit	Home birth	Freestanding Midwifery Unit	Alongside Midwifery Unit
Royal United Hospitals Bath NHS Foundation Trust	✓	✓	✓	Trowbridge Chippenham Frome Paulton	×
Great Western Hospitals NHS Foundation Trust	✓	✓	✓	×	✓
Salisbury Hospitals NHS Foundation Trust	✓	✓	✓	×	×

- Choice currently not equitable across the LMS footprint
- Proposals for change will ensure choice options are met for majority of population across the LMS footprint

Choice of place of birth

LMS Place of birth

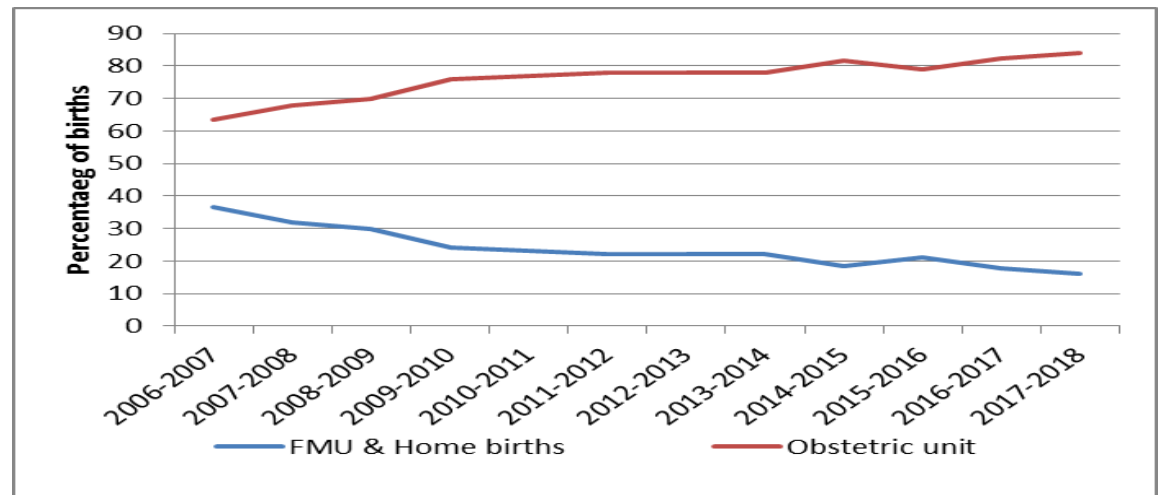


■ OU ■ AMU ■ FMU ■ Home ■ Other

- 11,247 births across the LMS in 2017/18, of which 85% were in an obstetric unit
- 7% were in a Alongside Midwife Unit (GWH) and 6% in a Freestanding Midwife Unit (RUH)
- RUH has seen an increase in numbers of births at the Obstetric Unit and a corresponding decline in numbers of births in their FMUs / home birth

RUH Maternity services has used a number of strategies to promote and encourage the Freestanding midwife units or home as a place of birth, yet despite these initiatives, the number of births continues to decline

Place of birth percentages for RUH, comparing Freestanding Midwifery Units to the Obstetric Unit from 2006/07 to 2017/18



RUH Activity



	Midwives	MCAs	Births	Clinics	Home Visits
RUH Bath					0
Bath Community Team		0	0		
Chippenham Birth Centre			0		
Trowbridge Birth Centre			0		
Frome Birth Centre			0		
Paulton Birth Centre and Shepton Mallet			0		0

RUH Activity



	Midwives	MCAs	On call	Births
RUH Bath				
Bath Community Team	0	0		0
Chippenham Birth Centre				0
Trowbridge Birth Centre		0		0
Frome Birth Centre				0
Paulton Birth Centre and Shepton Mallet				0

What have women and families said

- One of the greatest fears is transfer in labour
- More women want choice of having their baby in an Alongside Midwifery Unit
- Improved continuity of carer and safety high on agenda



Formal public consultation will capture more views and wishes with independent analysis of feedback from University of Bath

LMS Challenges

Challenge	Potential solutions
Lack of parity of provision	Review current birth offer across the LMS
Future sustainability	Capacity review based on population growth, housing policy and demographics
Under-utilisation	Review current provision of services across the LMS
Workforce – Right staff, right place, right time	Match workforce to demand – start planning new role for the future
Delivery of Better Birth agenda	Broader LMS Transformation Plan
Reduce the number of mums who smoke in pregnancy	Dedicated MSLC work stream

Indicative timeline

